

The Price Sheet

Ontario Market Price Trends for August 2010

MONTHLY AVERAGES (CDN\$/Metric Tonne)																
	May 2009	June 2009	July 2009	Aug 2009	Sept 2009	Oct 2009	Nov 2009	Dec 2009	Jan 2010	Feb 2010	Mar 2010	April 2010	May 2010	June 2010	July 2010	Aug 2010
Aluminum Cans	1116	1116	1215	1374	1362	1303	1418	1542	1640	1562	1604	1706	1599	1486	1482	1542
Steel Cans	53	56	74	100	159	163	140	179	229	251	282	285	246	265	260	266
Glass (clear)	25	25	25	25	25	25	25	25	25	25	25	25	25	25	25	25
Glass (mixed)	(18)	(18)	(18)	(18)	(18)	(18)	(18)	(18)	(17)	(15)	(14)	(17)	(16)	(17)	(17)	(15)
PET (mixed)	200	222	243	191	189	214	231	238	277	325	414	447	448	438	360	338
HDPE (mixed)	299	313	325	311	320	407	384	361	365	405	470	541	615	627	450	440
Plastic Tubs & Lids	24	16	23	26	24	17	20	22	27	32	32	41	76	62	55	62
Film Plastic	3	12	10	13	11	14	9	10	10	16	16	16	14	15	8	9
Polystyrene	75	75	75	75	75	75	75	75	75	0	0	0	0	0	0	0
Newspaper (ONP #8)	64	69	68	73	93	90	93	101	107	104	99	92	98	95	74	62
Corrugated (OCC)	55	71	82	78	96	88	88	88	116	159	195	157	140	136	125	124
Hardpack (OBB/OCC)	35	42	51	45	59	56	57	59	71	91	96	88	72	71	57	49
Boxboard (OBB)	17	28	30	30	41	39	39	44	47	50	72	69	69	70	62	44
Polycoat Containers	34	31	31	31	37	58	64	68	79	91	105	103	110	113	119	120
Composite Index	71	77	81	84	101	100	102	110	122	131	139	132	132	129	109	101

YEARLY AVERAGES (CDN\$/Metric Tonne)																	
	1994	1995	1996	1997	1998	1999	2000	2001	2002	2003	2004	2005	2006	2007	2008	2009	2010
Aluminum Cans	1731	2045	2045	1827	1595	1608	1893	1700	1709	1619	1772	1763	2169	2065	1904	1215	1578
Steel Cans							52	26	47	76	191	116	141	168	245	89	260
Glass (clear)	47	48	47	47	49	50	50	31	29	34	38	36	36	33	27	26	25
Glass (mixed)			0	(4)	(25)	(20)	(15)	(15)	(15)	(19)	(12)	(31)	(31)	(31)	(24)	(18)	(16)
PET (mixed)	181	650	650	155	300	144	326	324	166	278	432	507	314	368	352	187	381
HDPE (mixed)	259	345	356	447	226	211	373	257	233	364	428	683	565	524	573	320	489
Plastic Tubs & Lids		100	100	76	66	3	5	5	0	12	51	104	128	146	204	22	48
Film Plastic	40	40	40	(4)	(5)	(12)	7	26	0	8	55	148	137	51	35	3	13
Polystyrene	88	110	125	125	125	125	125	125	75	75	75	75	75	75	75	75	9
Newspaper (ONP8)	80	214	159	31	48	76	118	76	100	99	114	101	89	118	121	72	91
Corrugated (OCC)	94	159	214	97	73	99	112	55	106	89	114	95	80	131	111	68	144
Hardpack (OBB/OCC)	38	159	120	5	17	20	65	38	63	62	75	68	50	89	76	42	74
Boxboard (OBB)										43	62	53	41	70	62	26	60
Polycoat Containers		189	198	99	26	24	83	57	58	64	67	66	59	84	75	39	105
Composite Index							134	95	113	114	131	124	111	145	150	80	124

Notes:

- Prices are for baled post-consumer residential materials (except glass, which is loose).
- Prices are FOB the municipality except for glass and polystyrene which are delivery to mill / industry
- Prices are compiled from a range of municipal programs across Ontario combined with information from industry representatives. Prices may not be the same as actual prices being paid in any given program.
- The Composite Index is calculated using the overall composition of residential Blue Box material recovered and marketed in Ontario as reported from the approved 2008 WDO Datacall with some additional allocations to material categories. It does not include mixed plastics. Mixed glass includes coloured glass. ONP8 includes a quantity of lower grade papers sold at lower prices. Composition figures are updated annually. Details available upon request.

For more information please contact:

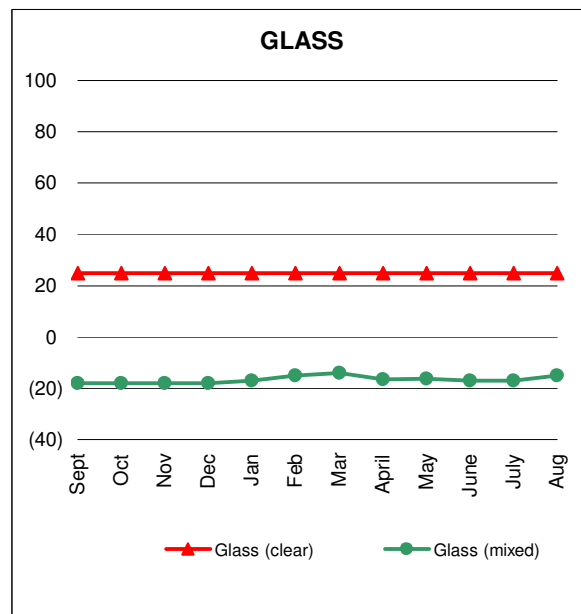
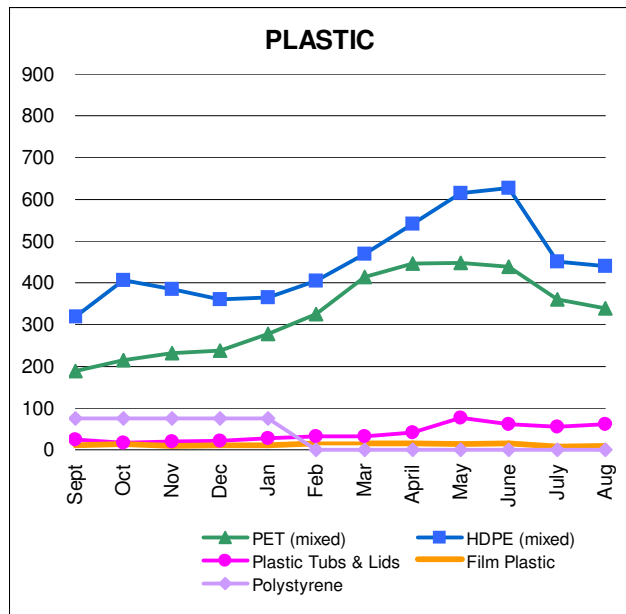
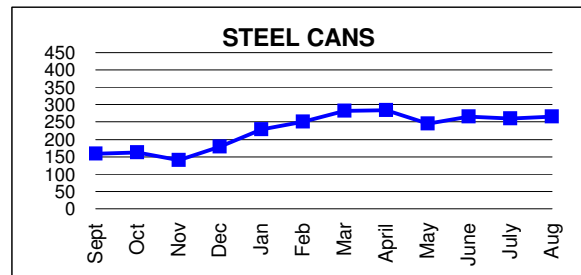
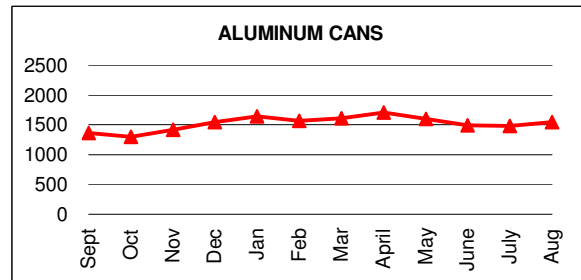
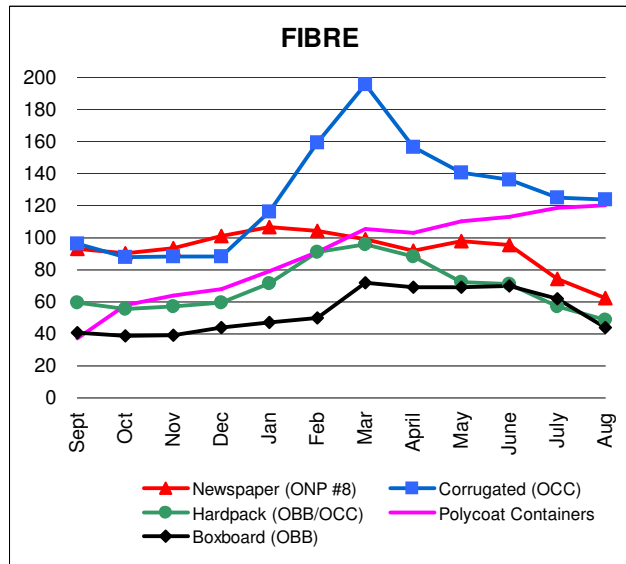
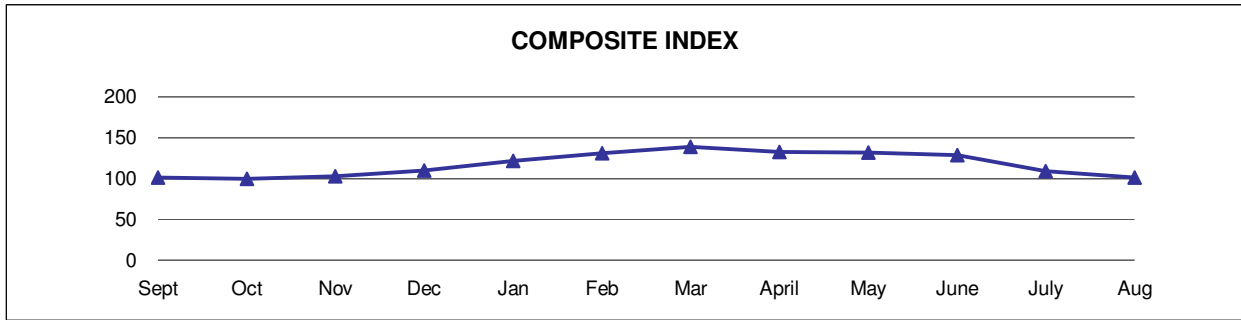
John Dixie at 647-777-3366 (Toll-Free: 888-277-2762, Ext. 3366) email: jdixie@stewardedge.ca

StewardEdge, 26 Wellington Street East, Suite 601, Toronto, Ontario, M5E 1S2

Past editions of the Price Sheet are archived on the StewardEdge website at <http://stewardedge.ca/pricesheet/>

The Price Sheet

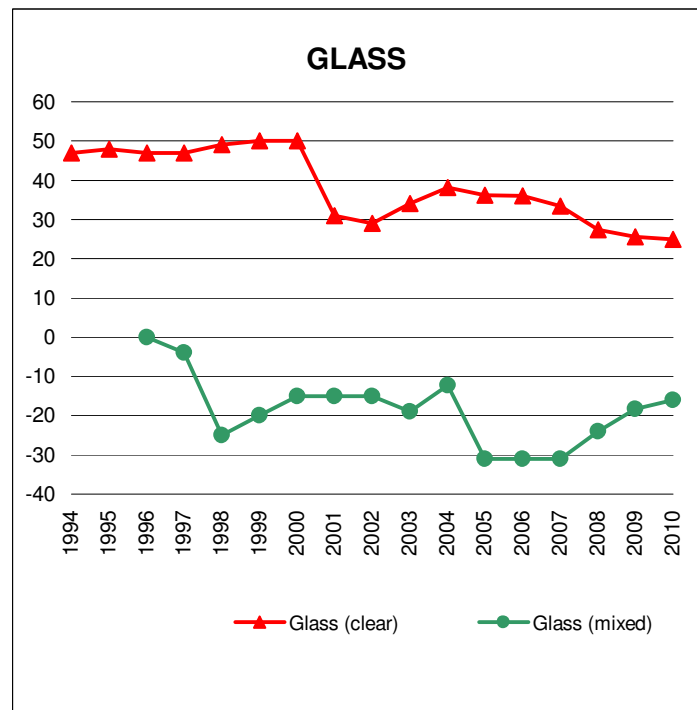
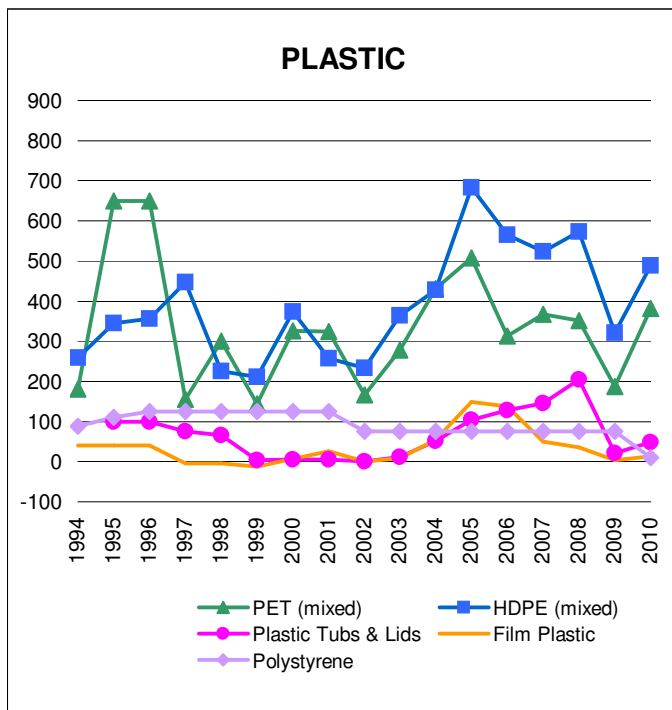
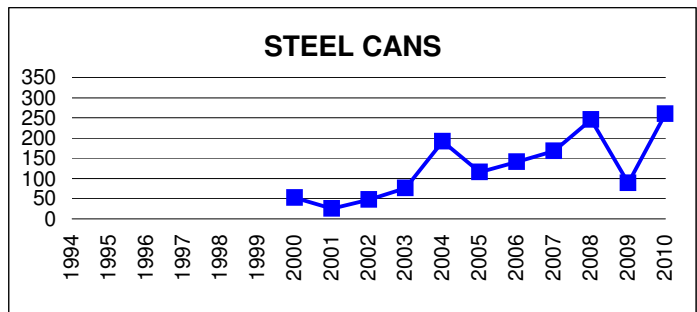
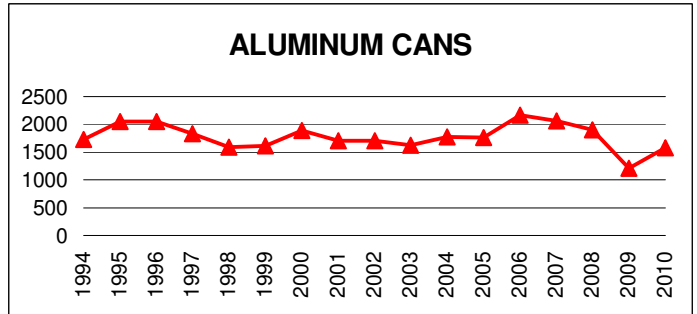
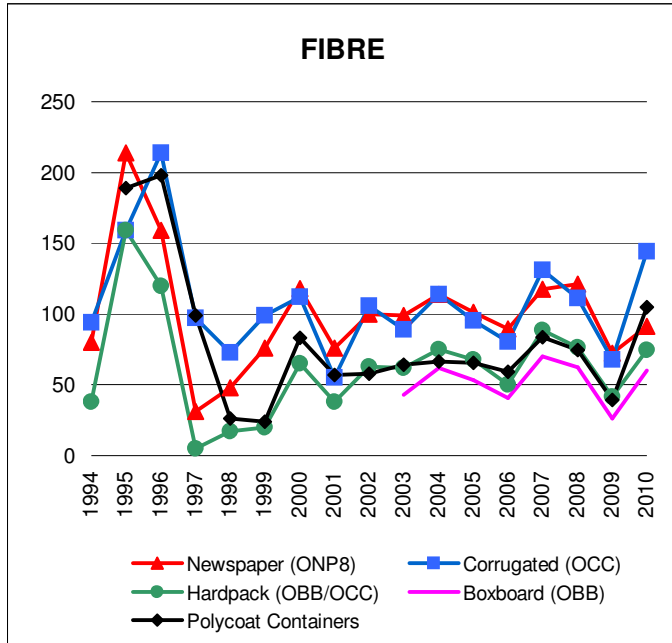
Ontario Monthly Averages from Sept 2009 to Aug 2010
(CDN\$/Metric Tonne)



Graphs produced from Monthly Averages Table.

The Price Sheet

Ontario Historical Yearly Averages (CDN\$/Metric Tonne)



Graphs produced from Yearly Averages Table